

## WHITNASH TOWN COUNCIL

### Annual Parish Report

2<sup>nd</sup> April 2009

This report is prepared using the most up to date information available. The first section which deals with the Council's finances, relates to the financial year which ended on 31<sup>st</sup> March 2008 and is compared with the previous year.

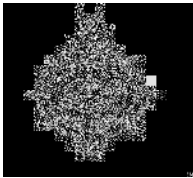
#### Financial Summary 31 March 2008:

	Year ending	
	31 March 07 £	31 March 08 £
Balances brought forward <i>The total balance at the start of the year</i>	63,691	84357
Annual precept <i>Money received through precept in Council Tax</i>	71,822	76086
Total other receipts <i>Other income additional to precept</i>	65,465	45029
Staff costs <i>Total expenditure on staffing inc. salaries, employers costs</i>	-38,369	-39887
Loan interest / capital repayments <i>Cost of servicing the Council's borrowings</i>	-1,535	-1,535
Total other payments <i>All other expenditure not accounted for above</i>	-76,717	-63928
Balances carried forward <i>The position at the end of the year and the start of the next year</i>	<b><u>84,357</u></b>	<b><u>100122</u></b>
Total cash and investments <i>Money held in current and deposit accounts</i>	78948	93380
Total fixed assets and long term assets <i>Book value of the Council's assets</i>	70,7201	742449
Total borrowings <i>Outstanding capital balance as at 31 March off loans from third parties</i>	7,621	6691

(Statement of accounts was signed off by the auditor on 16<sup>th</sup> September 2008)

#### Happenings during 2008 / 2009

- Whitnash Town Council was granted Quality Town Status for the second time.
- Councillor Mrs Judy Falp served as Chairman of Warwick District Council for 2008 / 2009.



- Community Forum for older people was held in September 2008
- Community Forum for young people was held in February 2009.
- New bus stop between Palmer Road and Halls Close has been added to the bus route in Whitnash
- The access road to the Community Hall was resurfaced in December 2008.
- New play equipment has been installed at Acre Close Playing Fields.
- New notice boards have been erected at Acre Close Playing Field, Heathcote shops, Home Farm Crescent, Box Close and outside St Margaret's House.
- New fencing has been erected behind the Community Hall to make the area more secure.
- A raised flower bed has been erected on the Village Green
- Millennium Garden has been revamped
- Major gas and sewer work has also been undertaken
- Town Plan in progress
- Rotary Tree of Light was illuminated on 17<sup>th</sup> November 2008 and Whitnash residents generously supported Macmillan Cancer Support as part of this event
- The Christmas Lights Switch-On 2008 was again a very successful event, attended by many Whitnash residents
- Grants were given to support 9 local organisations during the year
- Senior Citizens Lunch Club was launched in January 2009 as a result of the Community Forum for Older People
- Speed check monitors were placed in Coppice, Landor and Franklin Roads for short periods during the year.
- Sports development and Snax and Sport programmes are still run during the school holidays.

#### **Plans for 2009 / 2010**

- Installing a disabled toilet at Whitnash Community Hall
- Erecting a memorial plinth for Gary O'Donnell on Village Green

Jenny Mason  
Town Clerk